

Black Ice Software

Developer Newsletter

Inside this issue:

- Enhanced Redirect Printing for the Black Ice Printer Drivers **1**
- Newly Re-Released Fax Cover Page Generator SDK/ActiveX **1**
- Printer Driver Tips and Tricks: Locating the generated files **2**
- Installing and Configuring Dialogic Hardware **3**



The BLACK ICE NEWSLETTER is published by Black Ice Software, Inc. The contents of this newsletter in its entirety are Copyright © 2005 by Black Ice Software, Inc. 292 Route 101, Salzburg Square, Amherst, NH 03031, USA. Black Ice Software, Inc. does hereby give permission to reproduce material contained in this newsletter, provided credit is given to the source, and a copy of the publication that the material appears in is sent to Black Ice Software at the above address.

Phone: (603) 673-1019

Fax: (603) 672-4112

E-mail:

sales@blackice.com

www.blackice.com

Enhanced Redirect Printing for the Black Ice Printer Drivers

Redirect printing to multiple printers.

In addition to generating TIFF, JPEG, PDF, etc., the documents printed to the Black Ice printer can be printed to a physical printer, to get a paper copy of the document in addition to the electronic copy. This is a great feature for archiving and keeping a paper copy of the original. The Black Ice printer driver is capable of performing both of these steps with a single print. The user simply prints their Word, Excel, HTML, etc. document to the Black Ice printer and the Black Ice printer will generate the image and then forward the print job to an additional predefined printer. Per our customers' requests, Black Ice recently added a new feature allowing for redirecting print jobs to more than one printer at the same time. This new functionality allows devel-

opers to perform multiple printing operations at once, for example printing to the Black Ice PDF driver to generate a PDF file, and then redirecting the printing to both a physical printer and a fax printer to fax the document. In order to redirect to more than one printer, all of the specified printers must have the same settings, such as DPI (Resolution), Paper Size and paper orientation.

The printers are specified by name in the INI file of the Black Ice printer driver. The job will be redirected to the target printers in the order as they appear in the INI file.

Logging the print redirection.

The latest version of the Black Ice printer driv-

(Continued on page 2)

Newly Re-Released Fax Cover Page Generator SDK/ActiveX

The newly enhanced and re-released Black Ice Fax Cover Page Generator SDK/ActiveX toolkit allows developers to include a powerful, dynamic cover page generator with their application. Cover pages are ideal, if not essential, for all varieties of fax applications, and can also be used in non-fax programs such as report and invoice generating applications.

About Cover Pages

While cover pages are not required when sending facsimile transmissions, they are widely

used and provide a professional touch to transmitted faxes. In cases where confidential information is being faxed, inclusion of a cover page prevents prying eyes from accidentally perusing the enclosed material. Dynamically generated cover pages will benefit your customer base by increasing overall productivity (no more manually entering contact information for every fax) and greatly reducing the number of incorrectly addressed fax transmissions (automatic cover page filling leaves no room for hu-

man error). Adding cover page support to your application also provides an additional degree of professionalism to your developed application, and the use of dynamic cover pages will help your application outpace the competition.

The Fax Cover Page Generator SDK/ActiveX provides both a DLL and ActiveX control which provide two distinct functionalities: A cover page template editor and a cover page filler.

(Continued on page 2)

(Cover Page, continued from page 1)

Template Editor

Cover page templates can be designed by the developer using the included template editor, or developers can include the template editor functionality in their application and allow their users to design and modify their own cover page templates.

The Template editor allows users to add a variety of objects to a cover page template, including the following:

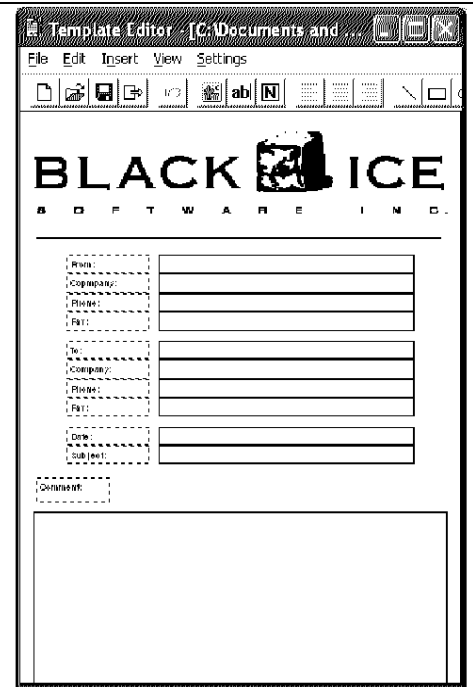
- 1 **Image:** This option allows you to add images or logos in TIFF or Bitmap format
- 2 **Field Text:** Dynamic Field Text will be filled in by the cover page generator based on information supplied by the developed application.
- 3 **Static Text:** Static text is text that will not change for each transmis-

sion. The same text will be on every cover page

- 4 **Line:** This option allows for the addition of lines to the cover page template.
- 5 **Rectangle:** This option allows for the addition of rectangles to the cover page.
- 6 **Ellipse:** This option allows for the addition of ellipses to the cover page.

In next month's newsletter, we will detail the use of the cover page filler as well as some benefits to using the Fax Cover Page generator SDK/ActiveX toolkit. In the meantime, developers are encouraged to download a fully functional evaluation version of the toolkit to try for themselves:

<http://www.blackice.com/coverpage.htm>



Fax Cover Page Template Filler

(Printing, continued from page 1)

ers have introduced a logging mechanism for the redirect printing option. The log will be generated in the output directory specified for the Black Ice printer and can be turned on and off from the INI file. The generated log will contain the date and the time the document was forwarded, the name of the printer(s) where the document was sent and the time when the printing finished. The log file can be used to track the forwarding process, report errors, etc.



Printer Driver Tips and Tricks: Locating the generated files

Using the Black Ice printer drivers, developers can specify any file name and/or output directory that they want to use, and like any Black Ice printer driver settings, these can be changed either programmatically or via the user interface.

When specifying an output folder specifically, it is important to ensure that the printing user has write privileges to the folder specified. Failing to have write access can cause one of two things, printing to fail completely or for the file to be generated in a different folder.

Locating the generated file

When the Black Ice printer driver generates files, it will initially try to create the files in the folder specified in the output directory field, which

can contain a standard path, for example C:\output, or an environment variable, such as <<TEMP>>, which will be parsed out to the associated path. If the driver is unable to generate the file in the specified folder, it will next try to create the file in the system folder. If this attempt fails, the driver will lastly try to generate the file in the root of the C: drive

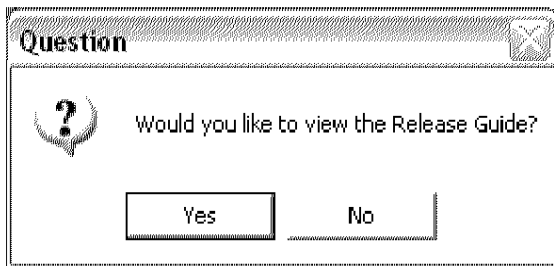
Since the output folder can be ANY folder, especially if developers allow their users access to the output directory field, the Black Ice printer drivers include a built in mechanism of reporting the folder that the files were generated in.

Unless disabled, the Black Ice printer driver will generate a group file during each print

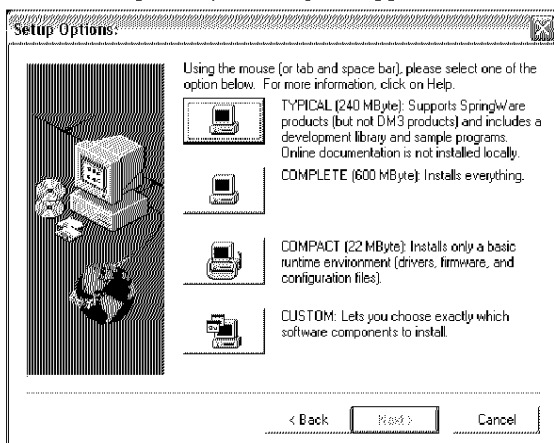
job. The group file generated by the Black Ice printer driver contains information about each print job as well as the names of all of the files generated by the Black Ice printer driver for that print job. The Black Ice printer drivers can also launch an application when printing is completed, and can pass a variety of parameters to the launched application, including the name and path of the group file generated for that print job. The developed application can parse the group file (it is a text based file) and retrieve the name(s) of the generated files. The Group File is documented in the printer driver manual, and you can also look at the OutputFileName sample application included in the RTK

Fax Hardware Installation Guide: Installing and Configuring Dialogic Hardware

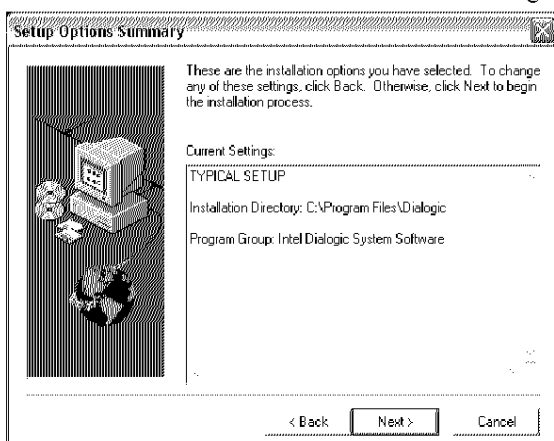
1. Run the Dialogic System Release 5.1.1 installation
2. When the installation begins, press the **Next** button and the following screen will appear.



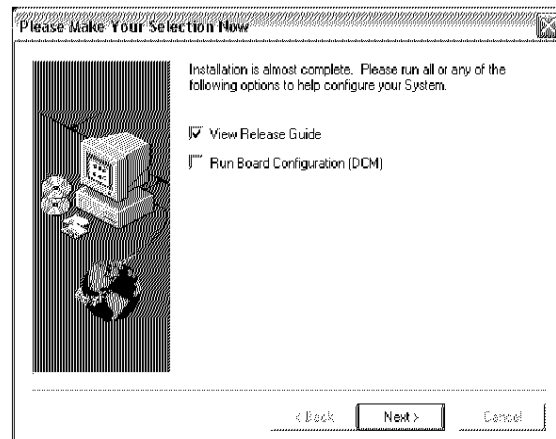
3. You may view the release guide and come back to the installation. Press **Yes** to read the guide, otherwise press **No**
4. Type your Name and Company in the fields and press **Next**
5. When the following screen appears, choose the **Typical** installation option by clicking the upper-most box.



6. Now choose the installation directory. The default will be C:\Program Files\Dialogic. Press **Next** to continue.
7. On the next window, specify the program group you want to use and press the **Next** button to continue.
8. The next window will be a summary of the settings you have selected, click **Next** to continue. See the image below.



9. The installation will copy files to your hard drive at this point.
10. When the next window appears, choose whether to view the Release Guide or not by selecting or deselecting the check box and click **Next**.



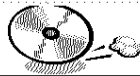
12. A new window will appear, select **Yes, I want to restart my computer now** and click **Finish**. Make sure that everything you are working on is saved and closed.
13. When Windows restarts, navigate to the Start Menu | All Programs | Intel Dialogic System Software | Configuration Manager – DCM.
14. When the Computer Name dialog appears, select whether to log on to a user account on this machine or to log on to a remote computer. Press **OK**
15. When the Computer Name dialog appears, select whether to log on to a user account on this machine or to log on to a remote computer. Press **OK**.
16. The Intel Dialogic Configuration Manager window will appear with the following toolbar at the top. Here you can make configuration changes as necessary.
17. Press the green button to start the Dialogic service and exit the Configuration Manager. Your Dialogic setup is now complete.



Inside

Enhanced Redirect Printing for the Black Ice Printer Drivers.
Newly Re-Released Fax Cover Page Generator SDK/ActiveX More Inside...

Time to upgrade?



Latest Version Numbers

Printer Drivers

Product	Version	Date
Printer Drivers for ME/98/95 Monochrome, Color, Metafile and PDF	5.71	3/10/05
Printer Drivers for XP/2000/NT Color, ColorPlus, Metafile, Mono- chrome and PDF	9.22	5/02/05
Printer Drivers for 2003, Citrix and Terminal Servers Color, ColorPlus, Metafile, Mono- chrome and PDF	9.22	5/02/05

Impact Products

Product	Version	Date
Impact Fax Server	6.00	3/28/05
Impact Fax on Demand	4.06	12/01/00
Impact Fax Broadcast	4.30	12/13/04
Impact ColorFax	6.00	7/22/04
Drag and Drop Printing	2.00	12/24/02

Fax, Voice and Image Toolkits

Product	Version	Date
Fax C++/ActiveX/COM	11.10	3/03/05
Voice C++/ActiveX/COM	11.10	3/03/05
Tiff SDK/ActiveX/COM	10.40	5/02/05
Annotation SDK/ActiveX/COM	10.40	5/02/05
Cover Page Generator SDK/ActiveX	10.40	5/02/05
Image SDK/ActiveX	10.40	5/02/05
Document Imaging SDK/ActiveX	10.40	5/02/05
Barcode SDK/ActiveX	4.20	4/01/05

Free Software

Product	Version	Date
Impact ColorFax Lite	6.00	7/22/04
Tiff Viewer Plug-in - Free Version	6.00	7/22/04
ModemWeasel	2.00	8/01/02

Internet Tools

Product	Version	Date
Print2Email	4.00	2/14/05
Tiff Viewer Plug-in - Complete	6.00	7/22/04
Print Monitoring Server	3.00	9/16/04