

HAPPY NEW YEAR!

What's Inside

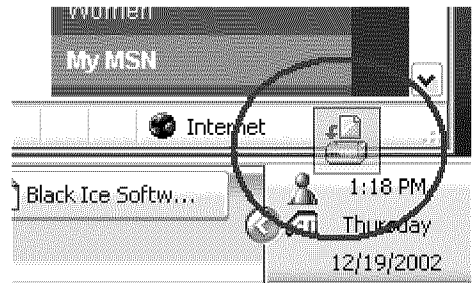
Drag and Drop printing	1
Real-time printer driver hook	1
Custom User Interface	1
Unicode text output	1
Auto-print technology	1
PDF Plug-in for TIFF SDK	2
J#.NET Samples for the printer drivers	3
Redirect printing	3
New functions of the TIFF SDK	3
Version Numbers	4

NEW! Drag and Drop Printing™ Application

Drag and Drop Printing™ utility

The Drag and Drop Printing™ utility from Black Ice Software drastically simplifies desktop printing by simply dragging a document over the “Floating window” and drop the document onto the Drag and Drop utility. The Drag and Drop utility can be installed for

(Continued on page 3)



Several new features in the printer driver version 7.50!

Real-time printer hook

The new version of the printer driver will allow users to modify the print job specific printer settings during printing.

In some situations it is required to change printer settings like the file format, the output directory, the name of the generated image file, etc., based on the document that is currently printed, i.e. if the name of the document con-

(Continued on page 2)

Custom User Interface

The tabs on the printer driver user interface now can be hidden.

We received several customer requests to provide a way to hide one or more tabs on the printer driver user interface. From version 7.05 of the Windows NT/Windows 2000/Windows XP printer driver and from version 5.05 of the Windows 95/98/ME printer driver, the user interface tabs now can be hidden by modifying a value in the printer driver's INI file. These INI file values

(Continued on page 3)

Unicode text output

Unicode text output is available in the Windows NT/Windows 2000/Windows XP printer drivers.

The latest version of the printer driver can save the text from the printed

(Continued on page 3)

Auto-print technology

Auto-print technology is now available in version 7.50 of the Black Ice Software Printer drivers. The Resource Toolkit contains the Auto-print sample with full source code. This simple but powerful sample helps developers to build applications

(Continued on page 3)



BLACK ICE NEWSLETTER is published by Black Ice Software, Inc. The contents of this newsletter in its entirety are Copyright © 2003 by Black Ice Software, Inc. 292 Route 101, Salzbürg Square, Amherst, NH 03031, USA. Black Ice Software, Inc. does hereby give permission to reproduce material contained in this newsletter, provided credit is given to the source, and a copy of the publication that the material appears in is sent to Black Ice Software at the above address.
Phone: (603) 673-1019
Fax: (603) 672-4112
E-mail: sales@blackice.com
www.blackice.com
ftp.blackice.com

Subscription Service available, call for details.
Get your subscription to avoid frequent upgrades.

(Real-time printer hook - Cont. from page 1)

tains the word "Invoice" then we could generate a TIFF file in the c:\Invoice directory. If the name of the document contains "Report" we could save the generated image in JPEG format into the C:\Report directory.

To modify printer settings like file format, output directory, file name, etc., the printer's Extended DEVMODE structure must be modified and the easiest way to do this is through the printer's user interface. The problem with this approach is that the modifications must be made

before the printing has started and must be done manually or programmatically every time a change is needed. To provide a much easier and simpler, automated solution for this problem, Black Ice added a mechanism to the Windows NT/Windows 2000/Windows XP printer drivers that lets developers create applications that monitor the printing process and modify the printer parameters depending on the document that is currently printed. Every time the printer driver starts printing a page, it will write the current DEVMODE structure into the printer

driver's pipe interface. If there is an application that monitors the printer driver's pipe interface, then the application will receive the DEVMODE structure and will be able to modify it. After modifying the DEVMODE structure, the application will send it back to the printer driver by writing it into the pipe interface. If the printer driver receives an updated DEVMODE structure within a predefined time period, the page will be printed based on the updated DEVMODE structure.

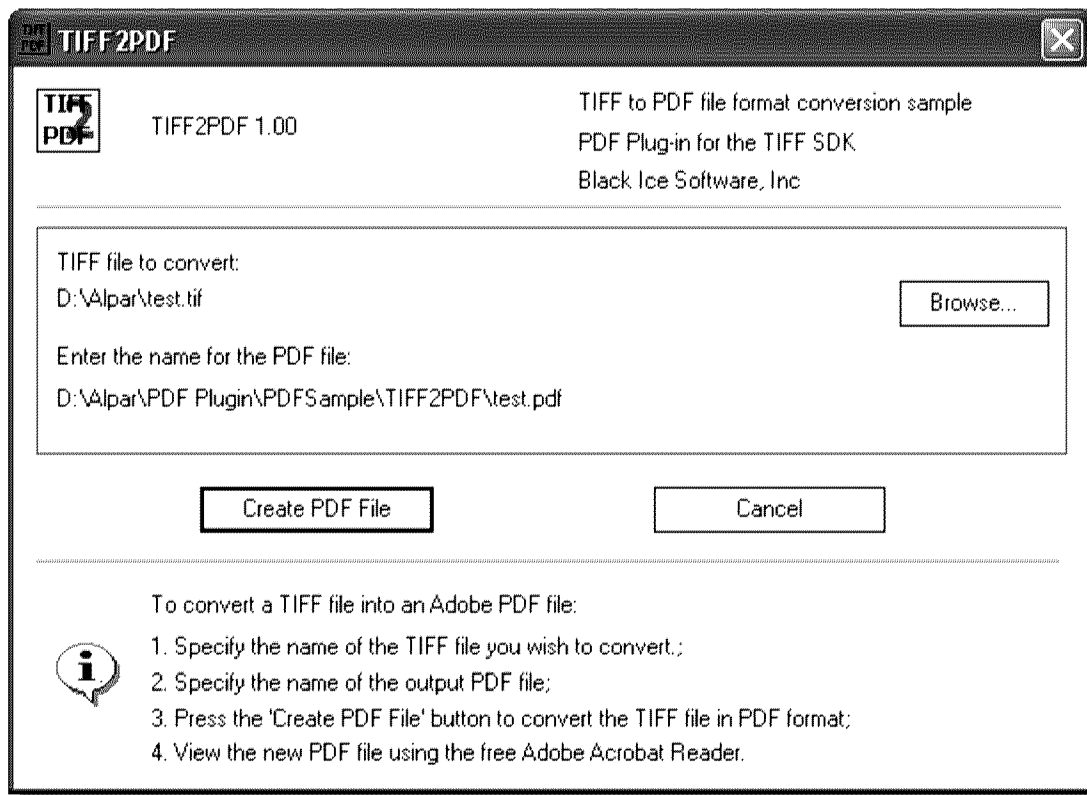
PDF Plug-in for the TIFF SDK

A new plug-in is available for the TIFF SDK.

The new PDF plug-in enables the conversion from different image formats to the popular PDF (Adobe Portable Document Format) file format. Using the PDF Plug-in any image type supported by the TIFF SDK can

which can be easily integrated with any new or existing application.

The PDF Plug-in DLL exports both C and C++ interface for the developers. The PDF Plug-in OCX can be used like any other Active X control.



The TIFF SDK is used by the PDF plug-in, so the TIFF SDK must be present on the computer in order to use the PDF plug-in for development. The PDF Plug-in for TIFF SDK comes with three sample applications with full source code. The C++ sample shows how to use the PDF plug-in DLL to convert TIFF files to PDF files. The second C++ sample will show to use the C interface. The sample converts tiff files specified as command line parameters into PDF files. The Visual Basic sample shows how to use the OCX in applica-

be converted into PDF format.

The plug-in provides easy to use, high level functions,

tions. The sample is similar to the C++ sample, it converts a TIFF file to PDF format using the PDF Plug-in OCX.

(Auto-print - Continued from page 1)

which can convert MS Office documents such as Word, Excel, Power Point and Adobe PDF files without user intervention. The auto-print sample code is available in C, C++ and Visual Basic languages. Some of the business applications of the auto-print are:

- Fax server receive a Microsoft Office document from client and automatically converts it to fax.
- Print2Email
- Desktop fax software.
- Archiving application.

- Any applications that require server based document conversion.

(UNICODE text output - Continued from page 1)

document into a UNICODE text file. By generating UNICODE text files, the printer driver can now save the text information from any document, regardless of the language and the character set used.

(Custom user interface - Continued from page 1)

can be set at installation time or they can be changed anytime, even pro-

grammatically from an application. The printer driver will read these values every time the printer driver user interface is displayed.

New J#.NET samples

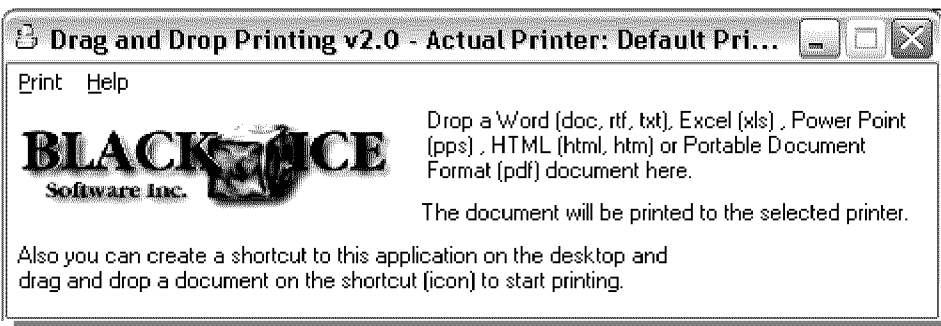
J#.NET samples for the printer drivers are shipped with the new Resource Toolkit.

The new Resource Toolkit includes three new samples to demonstrate how to programmatically change the printer settings and to get the name of the generated image files.

(Drag and Drop print Utility - Continued from page 1)

multiple physical printers and it can sit in the system tray or a small icon can float on the desktop. Some of the business applications:

- Several physical printer are located in an office or in the building, you can "drag and drop" the document onto the desktop link pointing to the application. This will print the document without opening MS Word.
- Send a fax through your fax server printer driver, by "dragging and dropping" the document on the link pointing to application.



Redirect printing

The redirect printing feature in the Black Ice printer Drivers is far more successful than we anticipated and many companies have started to use it in various applications. This technology has opened some new ideas not seen before.

The most popular one is "print" archiving. The printer driver version 7.02 can automatically use (clone) the physical printer's setting like the page orientation, paper size and resolution. When the Black Ice Software "universal" printer driver is configured to use the settings of the physical printer, this new feature allows generation of identical copies of the printed document in TIFF, JPEG, PDF format with simultaneous physical paper output.

The fully functional demo version of the printer drivers can be downloaded from our website at <http://www.blackice.com>.

New functions in the TIFF SDK

New functions were added to the to the TIFF SDK product to detect blank pages in the TIFF files. Blank (empty, white) pages can be added to multi-page TIFF files during batch scanning as a separator page.

Using these new functions of the TIFF SDK the application can easily determine if the given page in the TIFF file is a blank page or not, or even find the offset of the blank pages in a multi-page TIFF file by using only one function call.

Upcoming topics in the February Newsletter

Some of the upcoming topics for the February newsletter are:

- New version of the popular **Print2Email** application with PDF file format support and integrated with new Drag & Drop Print technology.
- New release of the **Impact Color Fax** software with new printer driver technology and new Drag & Drop Printer technology.
- Read on new upcoming printer driver technology.

