

Black Ice LPD Server has released | Use BILPDMangerwith Black Ice Printer Drivers
 You're receivingthis newsletterbecause you signed up at BLACKICE.COM
 Havingtrouble readingthis email? [View it in your browser](#). Not interested anymore? [Click Here](#).

black ice
 Newsletter

www.blackice.com

Announcements

In order to provide the best support for our customers **technical support requests must be submitted through our [website support forms](#).**

The Black Ice Support form generates a ticket number and you must **save this ticket number** for future reference.

Technical support requests for Customers without a valid Maintenance subscription will be handled through the Black Ice Forum.

Contact Information

<http://www.blackice.com>

Phone: 1(603)-882-7711

Fax: 1(603)-882-1344

Exclude Me

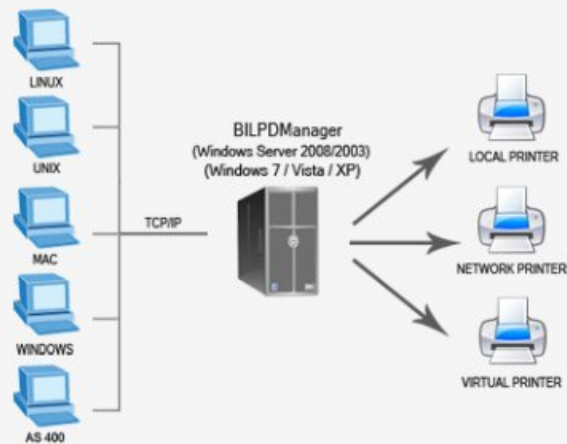
If you no longer wish to receive this email [please click here](#).

BlackIceSoftware- January 1, 2012

Black Ice LPD Server has released

Black Ice Software is announcing the release of the **Black Ice LPD Manager** version 2.01 for Windows 7/Vista/XP and for windows server 2008 R2/2003.

The BILPDManger is a LPD Print Server which receives print files from UNIX, Linux, MAC and Windows host systems via TCP/IP and prints them to networked local or shared printers. The Black Ice LPD Manager works as a service and listens for requests on default TCP port 515 named LPR/LPD (Line Printer Remote/Line Printer Daemon) which is a TCP/IP printing protocol and network print server. BILPDManger can support multiple printers, in which case, the client identifies the intended printer by its queue name.



Key Features !

- Receiving print jobs from UNIX, Linux, MAC and Windows host systems
- Print to multiple printers, different formats, from a single queue
- Pass RAW data to printer
- Receives print jobs from an AS/400 Mainframe Computer system
- Monitor and easy control of print queues, which can be operated independently
- Can accept jobs with an unknown queue name

In order to provide a complete printing system, LPR/LPD is used with a printer driver that converts the data into the command format required by the printer.

Use BILPDManger with Black Ice Printer Drivers

The BILPDManger can considerably simplify close integration of Linux, AS400, UNIX platforms document management with Windows based systems. The BILPDManger can redirect print jobs from Linux, AS400, Unix system directly to the Black Ice Printer driver spooler. The Black Ice printer driver can convert the received print job to PDF, TIFF, JPEG, etc

Read more about BILPManager at
www.blackice.com/BILPManager

BILPManager version 2.01

Download Now!

Black Ice Software, LLC 20 Broad St Nashua, NH 03064 USA
www.blackice.com Telephone 1(603)-882-7711, Fax: 1(603)-882-1344