

15% Discount for PDF OEM drivers | Improved font handling for special Chinese, Korean and Greek fonts in PDFs |
You're receiving this newsletter because you signed up at BLACKICE.COM
Having trouble reading this email? [View it in your browser](#). Not interested anymore? [Click Here](#).



www.blackice.com

15 % Discount for PDF OEM Printer Drivers

Valid through January 31, 2011
This offer cannot be combined with any other discounts.

What's Inside?

- Improved font handling for special Chinese, Korean and Greek fonts in PDFs
- More features for the "Save As" option
- Preview of the Photo quality settings
- Start Application: Remove parameters - > Pass Parameters (new)

Announcements

In order to provide the best support for our customers **technical support requests must be submitted through our website's support forms.**

The Black Ice Support form generates a ticket number and you must **save this ticket number** for future reference.

Technical support requests for Customers without Maintenance subscription will be handled through the Black Ice Forum.

Contact Information

<http://www.blackice.com>

Phone: 1(603)-882-7711

Fax: 1(603)-882-1344

Black Ice Software - January 12, 2011

Black Ice Software has released version 13.05 of Black Ice printer drivers

Improved PDF module, Save As dialog

Improved font handling for special Chinese, Korean and Greek fonts in PDFs

In version 13.05 of the Black Ice ColorPlus and PDF printer drivers, the PDF output has been improved for fonts with Unicode font names.

Previously e.g. on Chinese operating systems, if a font was being used in the document with Unicode font name (like 宋体) the printer driver could not find the proper font file, and as a result the output PDF was incorrect.

From version 13.05 onwards the printer driver will be able to find the English name of the font, in this case, for the 宋体 font (on the Chinese Windows) the printer driver will now use the SimSun font name, and the output PDF will be generated correctly.

新年快乐

새해 복 많이 받으세요

Ευτυχισμενος ο καινουργιος χρονος

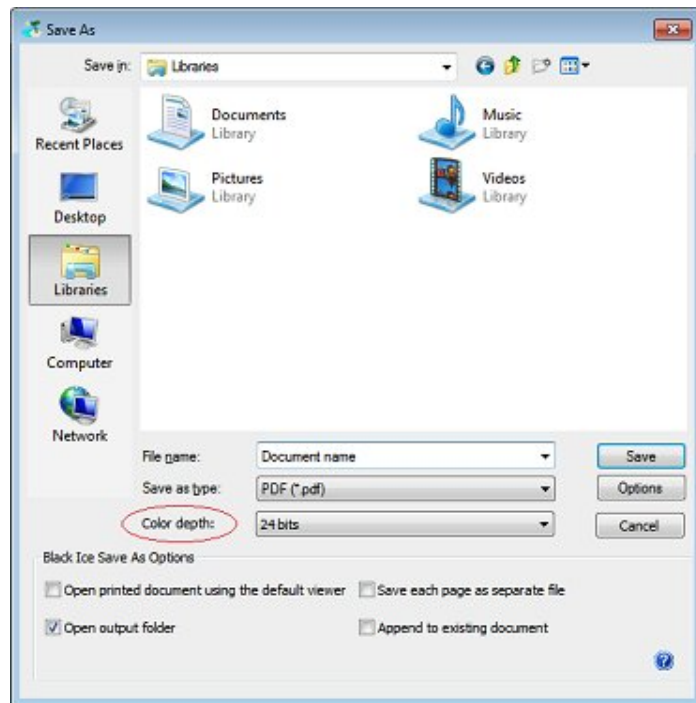
More features for the "Save As" option

When the 'Enable Save As' option is selected, the Save As dialog will be displayed each time before saving a file. With version 13.05 of the Black Ice Printer Drivers, the color depth settings can be specified as well on the Save As dialog.

The values can be: 1 bit (monochrome, black and white), 8 bits (256 colors), 8 bits grayscale (256 shades of grey) and 24 bits (16 million colors). Please note that certain file formats do not support all the available color depth options.

Exclude Me

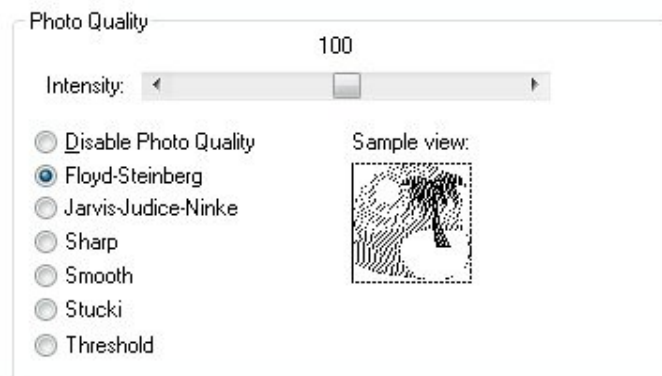
If you no longer wish to receive this email [please click here](#).



Preview of the Photo quality settings

The Photo Quality option improved in the ColorPlus, Color, PDF and Monochrome printer drivers. When Photo Quality is enabled, five high quality filters become accessible. Digital half-toning, also referred to as spatial dithering, produces the illusion of continuous-tone pictures on media that is only capable of displaying binary picture elements, for example: fax machines and most printers. Floyd-Steinberg and Jarvis-Judice-Ninke are the text book filters. The Smooth, Sharp, and Stucki filters are less known, but produce better quality output. Floyd-Steinberg is the default setting.

The sample view now shows the selected settings on a test image.




Start Application: Remove parameters -> Pass Parameters (new)

In former versions of Black Ice printer drivers, when using the start application feature, one would have to specify which parameter to remove from the passed parameters list. Many of our customers indicated that they would like this feature to work the other way around. The user should specify what parameter to pass to the application. From version 13.05 onwards, checked parameters will be passed to the start application instead of being removed.

Device Settings	File Formats	Filename Generation
Start Application	Watermark	Embed Annotation

Enable Start Application

Application:



Start Before Printing Start After Printing

Pass Parameters

Pass parameters

<input checked="" type="checkbox"/> Document name	Document Name
<input checked="" type="checkbox"/> Output filename	Group File Name
<input checked="" type="checkbox"/> Groupfile name	Printer Name
<input checked="" type="checkbox"/> Printer name	Number of Pages
<input checked="" type="checkbox"/> Number of pages	Multipage
<input checked="" type="checkbox"/> Multipage	Orientation
<input checked="" type="checkbox"/> Orientation	Output Filename
<input type="checkbox"/> Custom parameter	

Custom Parameter:

Black Ice ColorPlus PDF Printer Driver v13.05

